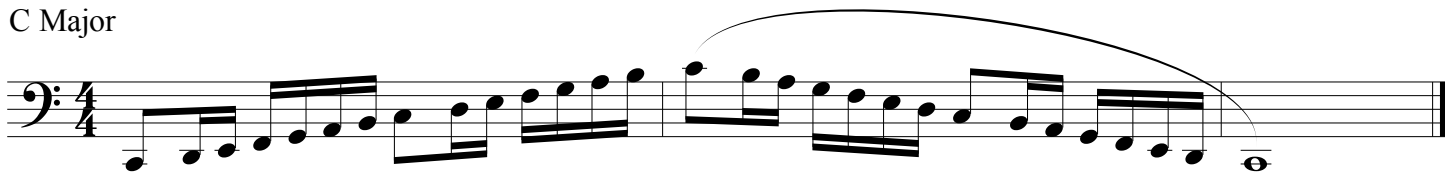


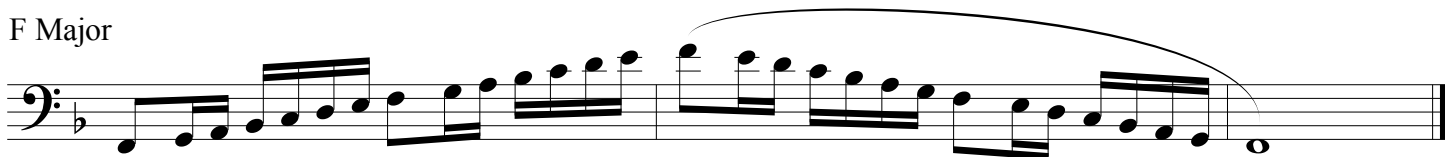
Major & Chromatic Scales Bass Trombone



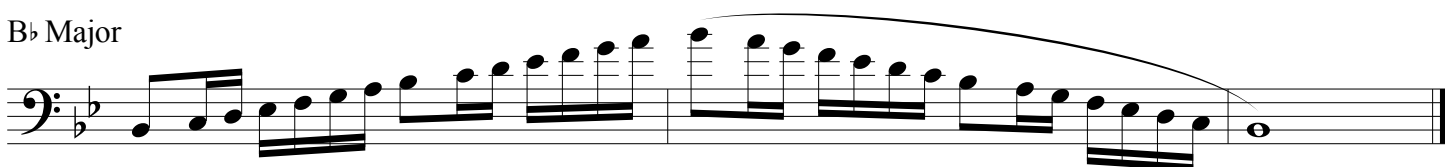
C Major



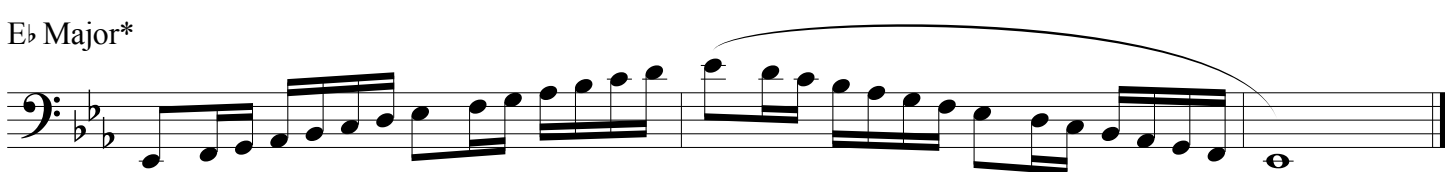
F Major



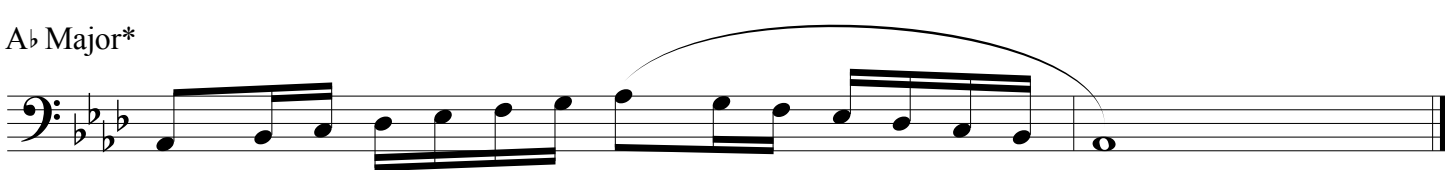
Bb Major



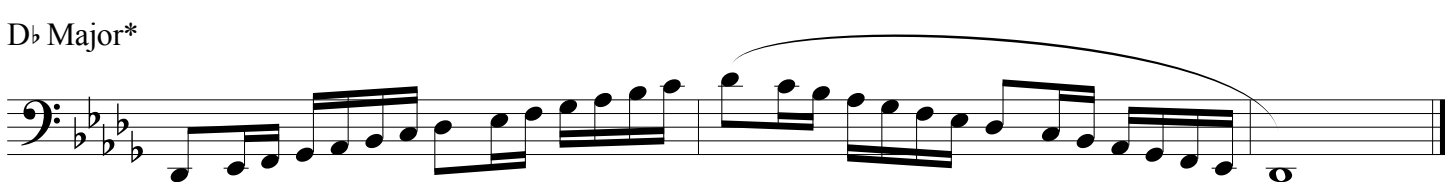
Eb Major*



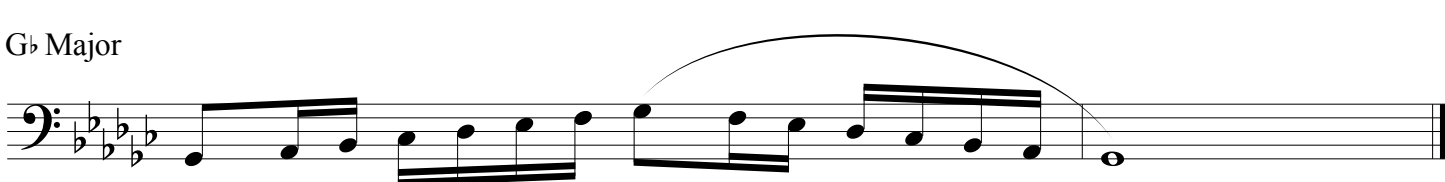
Ab Major*



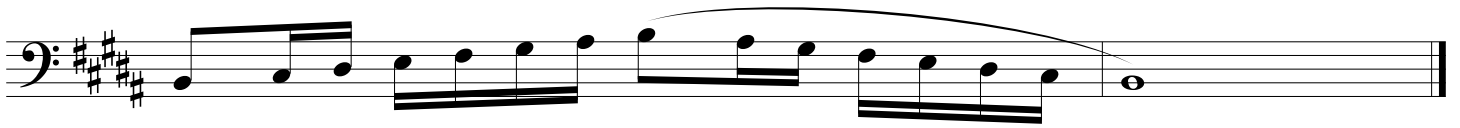
Db Major*



Gb Major



B Major



E Major



A Major*



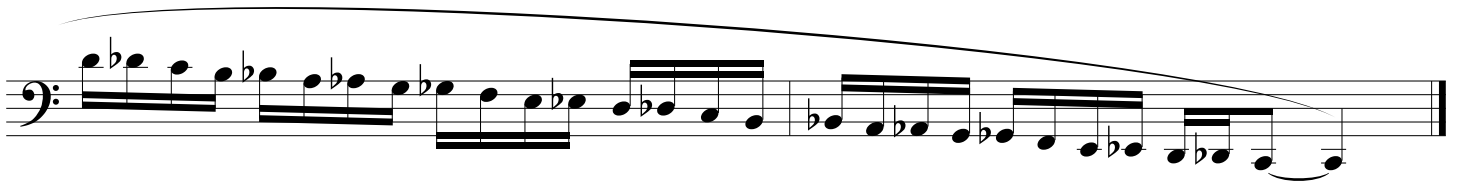
D Major*



G Major*



Chromatic Scale



1. Tempo is $\text{♩} = 72$
2. Scales marked with an asterisk (*) are required for District Honor Band on odd numbered audition years.
3. Scales without an asterisk (*) are required for District Honor Band on even numbered audition years.
4. Chromatic scale is required for District Honor Band every year.
5. All scales are required for LMEA All-State every year.
6. Rhythm, articulation, and tempo must be adhered to.