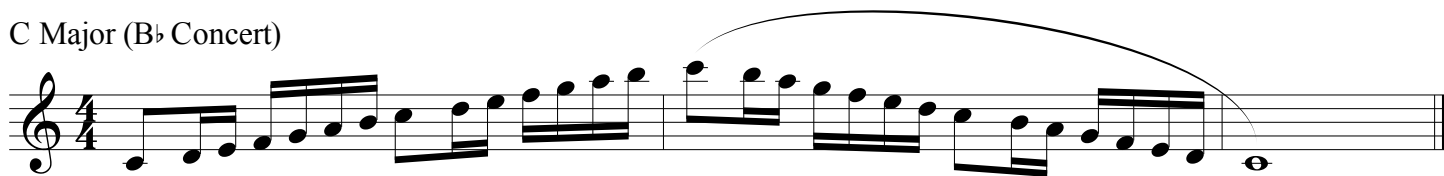


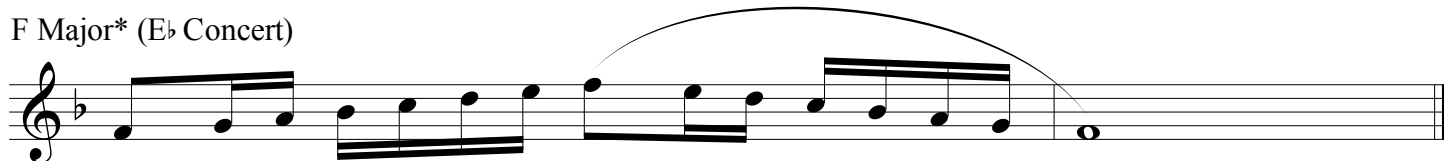
Major & Chromatic Scales Trumpet & Baritone T.C.



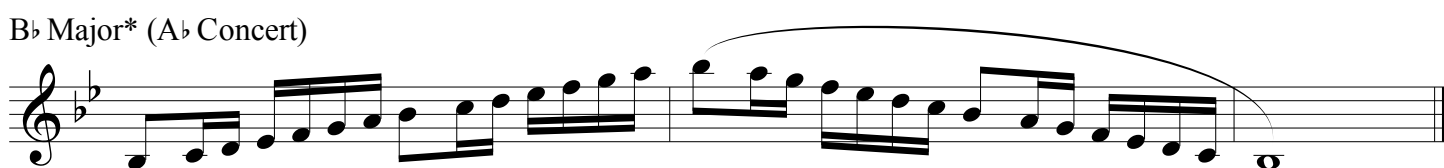
C Major (B \flat Concert)



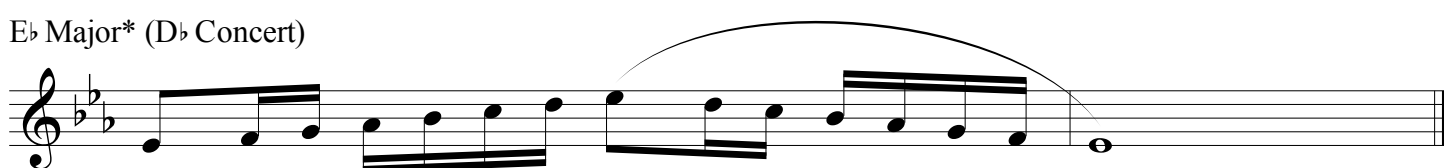
F Major* (E \flat Concert)



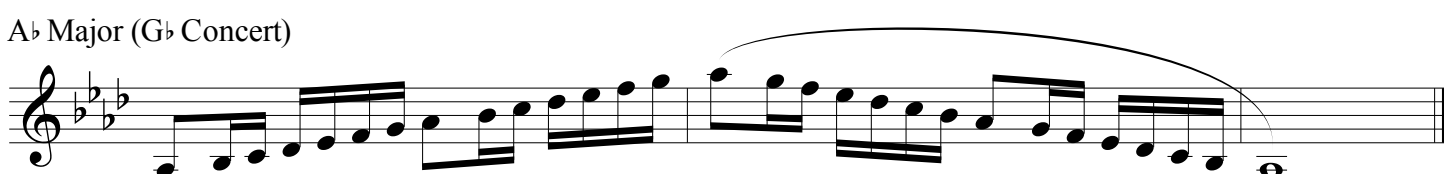
B \flat Major* (A \flat Concert)



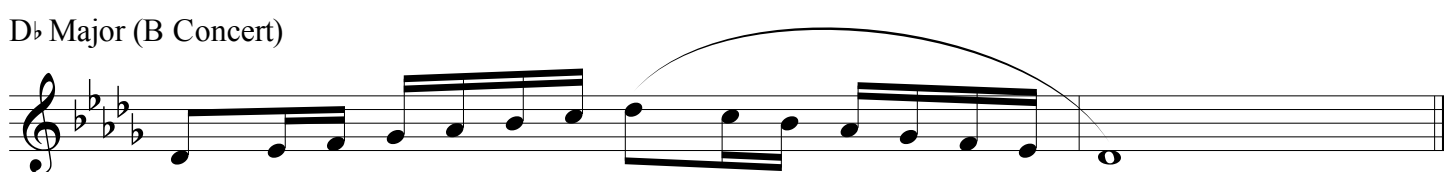
E \flat Major* (D \flat Concert)



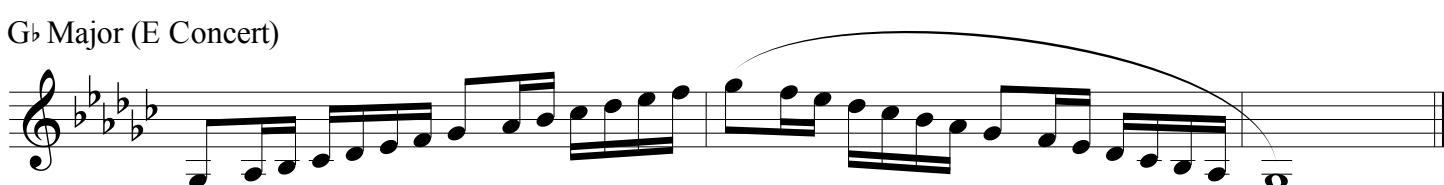
A \flat Major (G \flat Concert)



D \flat Major (B Concert)



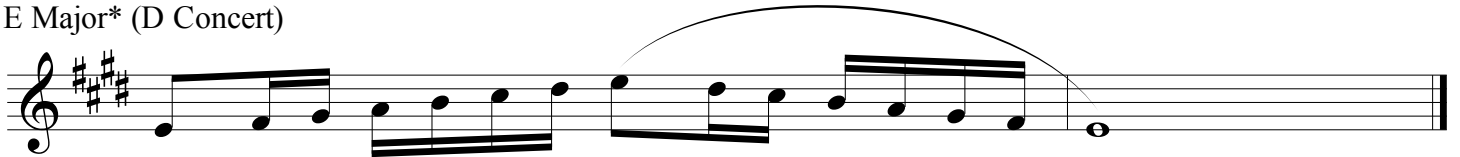
G \flat Major (E Concert)



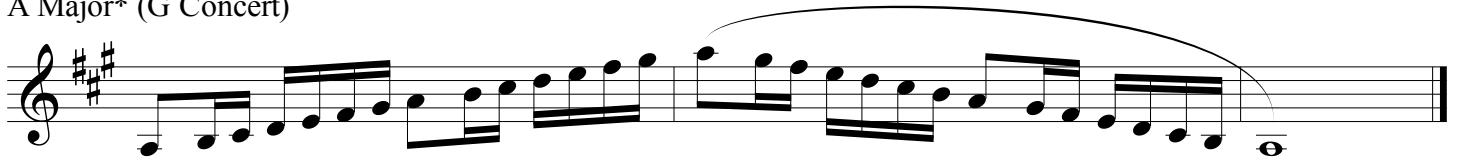
B Major* (A Concert)



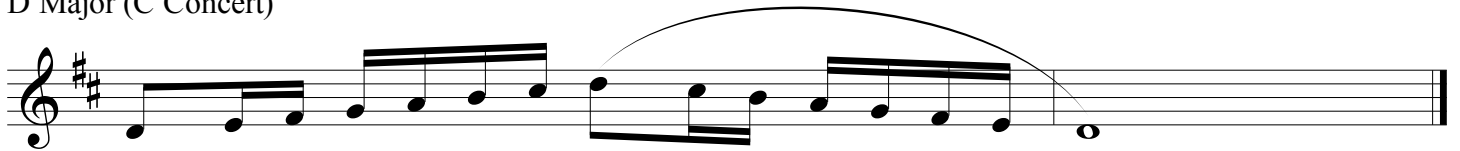
E Major* (D Concert)



A Major* (G Concert)



D Major (C Concert)



G Major (F Concert)



Chromatic Scale



1. Tempo is $\text{♩} = 72$
2. Scales marked with an asterisk (*) are required for District Honor Band on odd numbered audition years.
3. Scales without an asterisk (*) are required for District Honor Band on even numbered audition years.
4. Chromatic scale is required for District Honor Band every year.
5. All scales are required for LMEA All-State every year.
6. Rhythm, articulation, and tempo must be adhered to.