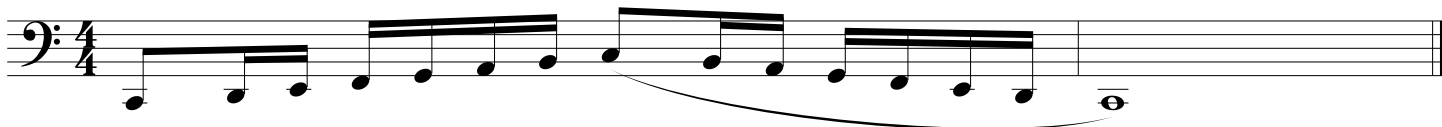


# Major & Chromatic Scales Tuba



C Major



F Major



Bb Major



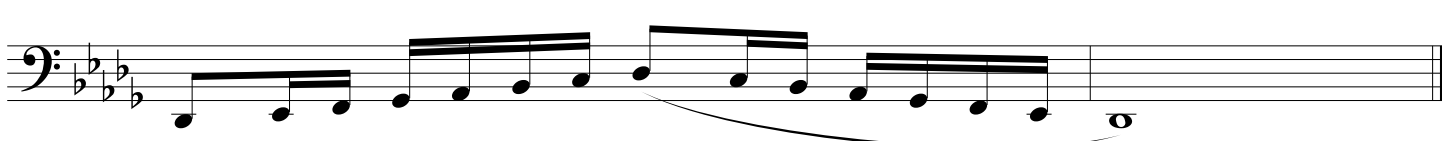
Eb Major\*



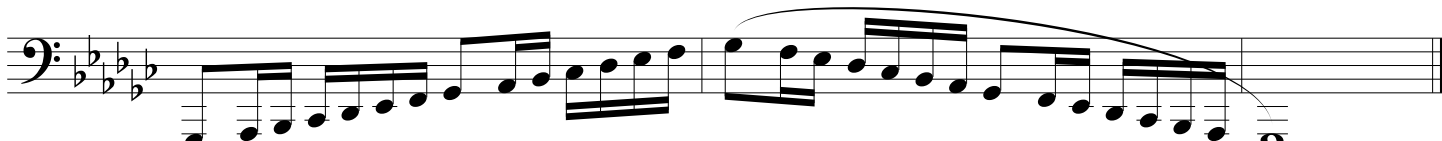
Ab Major\*



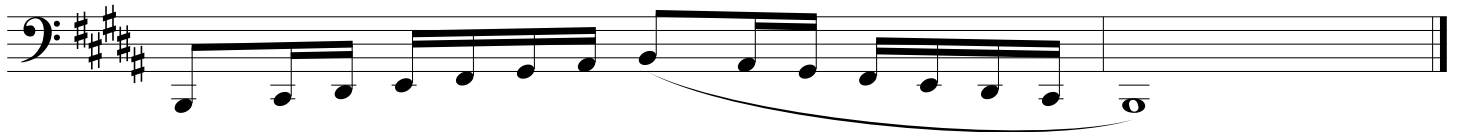
Db Major\*



Gb Major



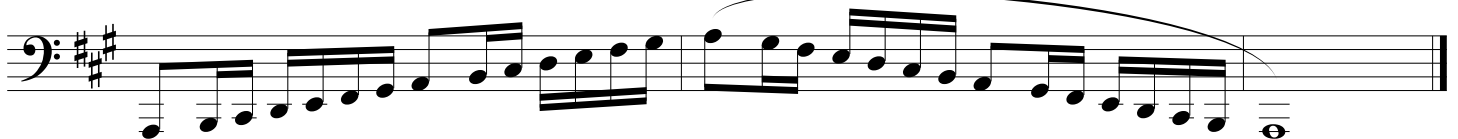
## B Major



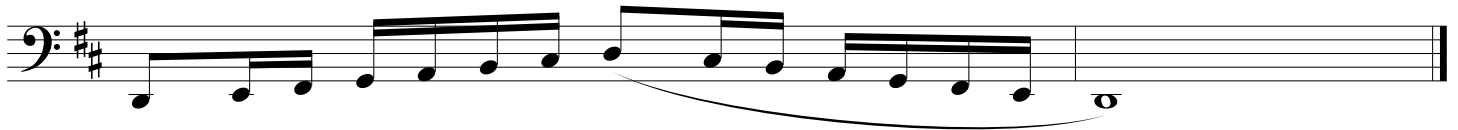
## E Major



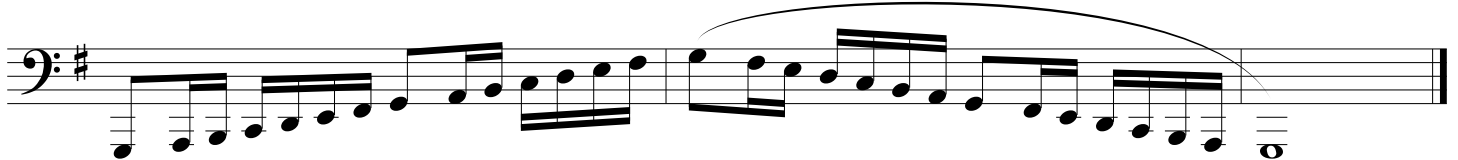
## A Major\*



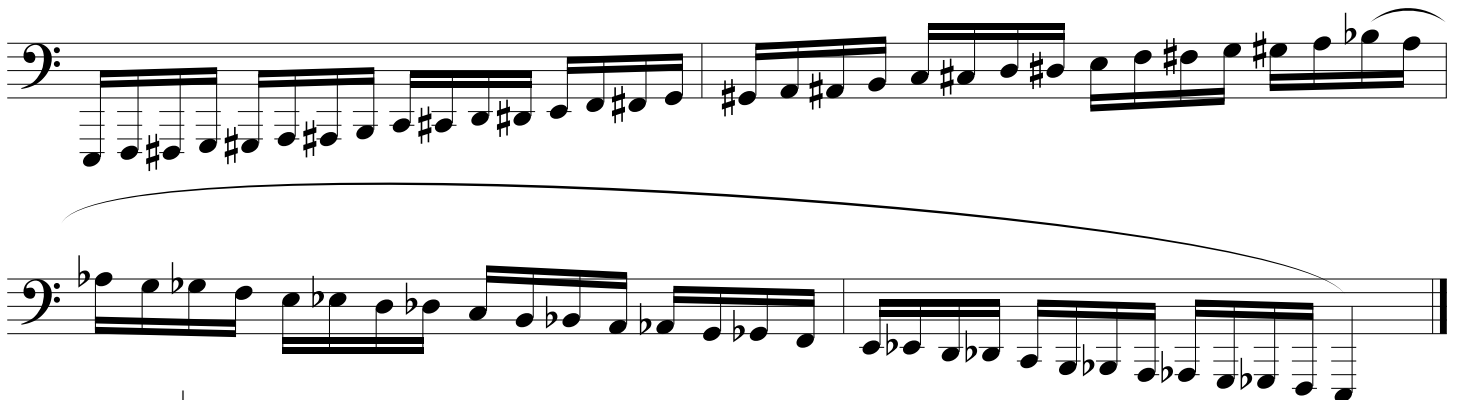
## D Major\*



## G Major\*



## Chromatic Scale



1. Tempo is  $\text{♩} = 72$
2. Scales marked with an asterisk (\*) are required for District Honor Band on odd numbered audition years.
3. Scales without an asterisk (\*) are required for District Honor Band on even numbered audition years.
4. Chromatic scale is required for District Honor Band every year.
5. All scales are required for LMEA All-State every year.
6. Rhythm, articulation, and tempo must be adhered to.