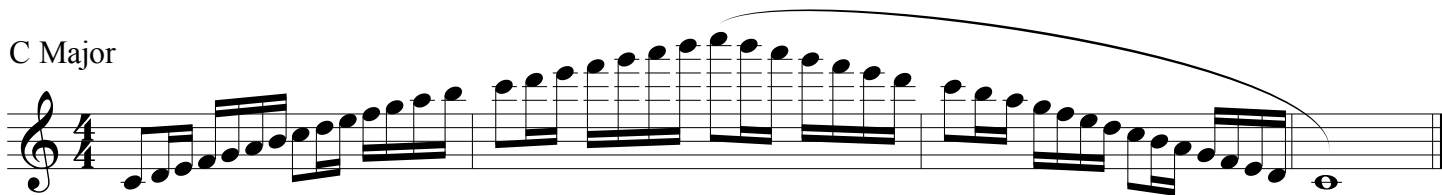


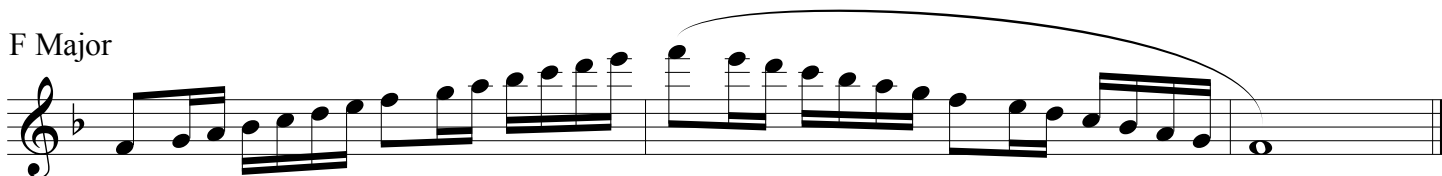
# Major & Chromatic Scales Flute



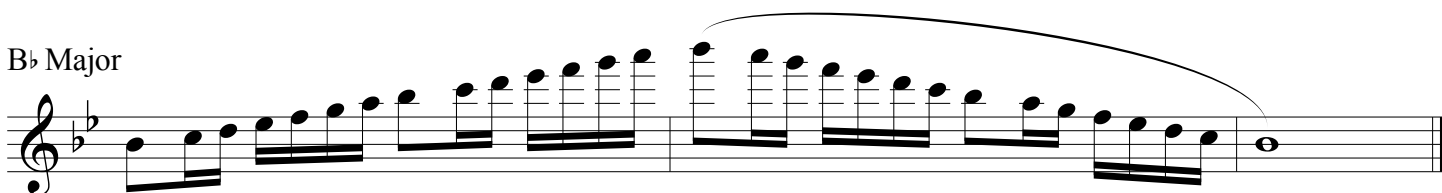
C Major



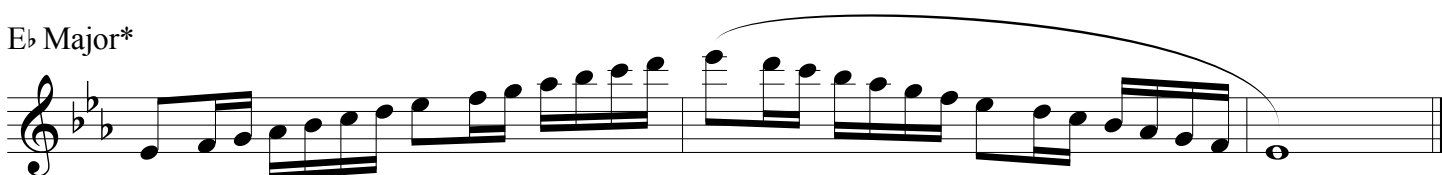
F Major



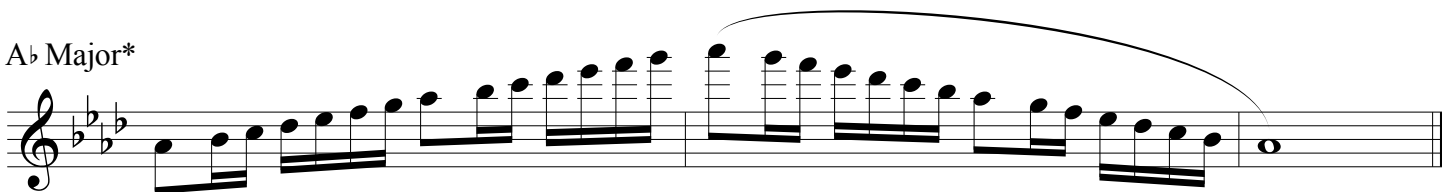
B $\flat$  Major



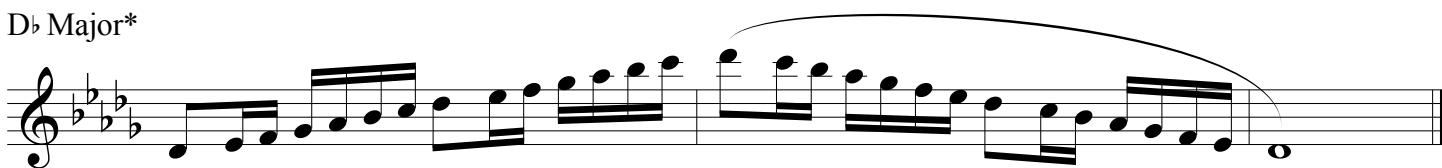
E $\flat$  Major\*



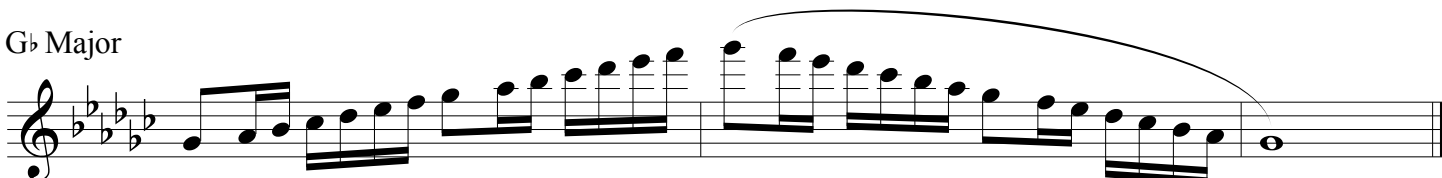
A $\flat$  Major\*



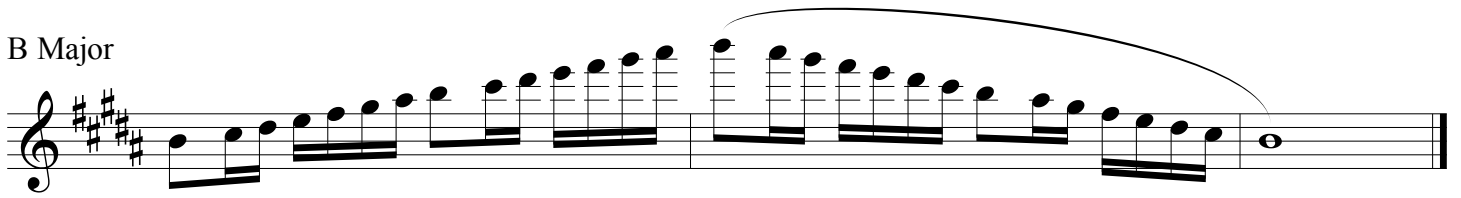
D $\flat$  Major\*



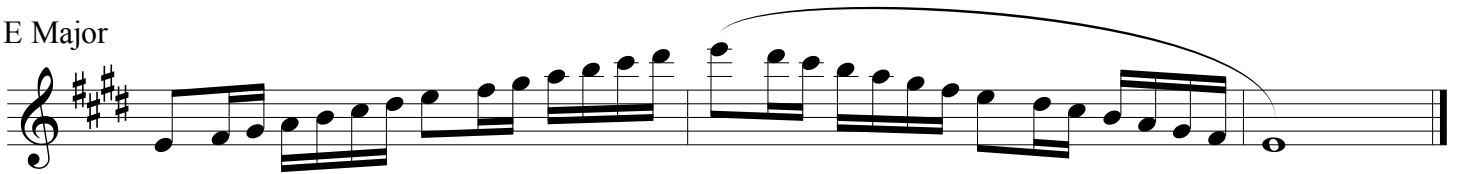
G $\flat$  Major



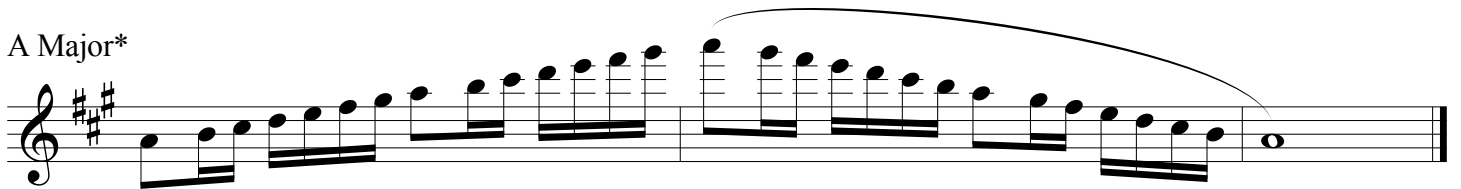
## B Major



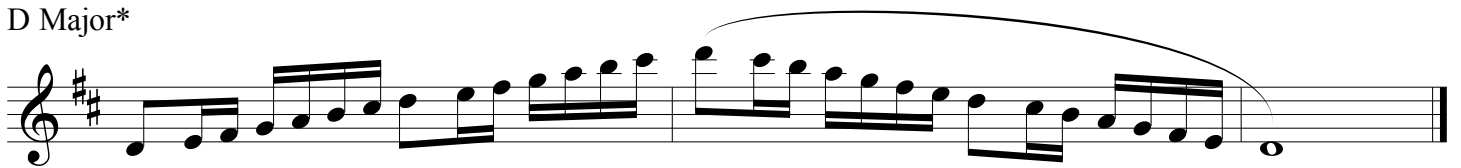
## E Major



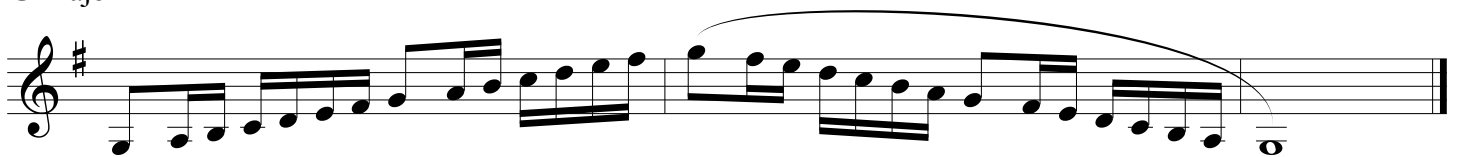
## A Major\*



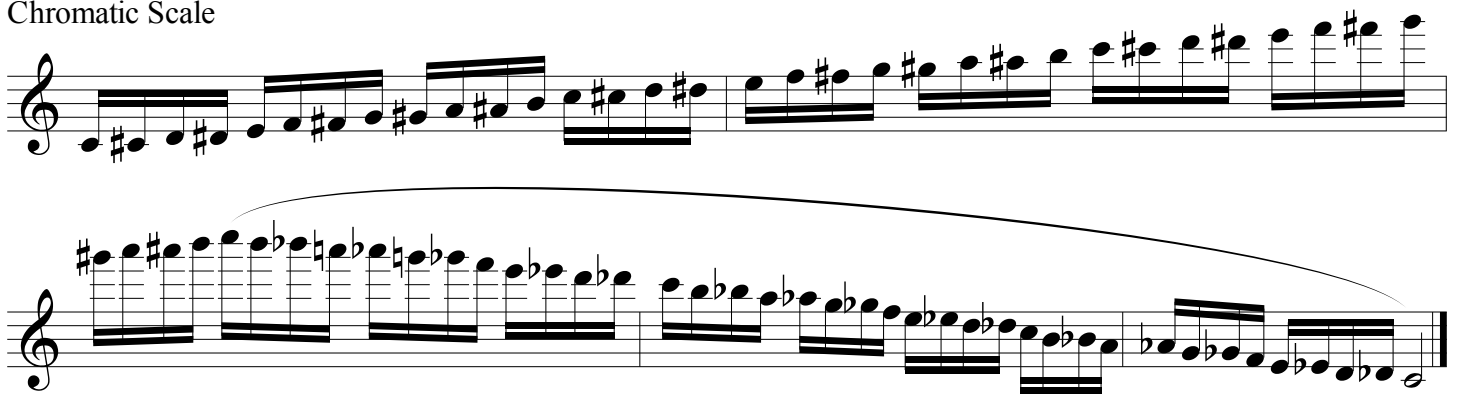
## D Major\*



## G Major\*



## Chromatic Scale



1. Tempo is  $\text{♩} = 72$
2. Scales marked with an asterisk (\*) are required for District Honor Band on odd numbered audition years.
3. Scales without an asterisk (\*) are required for District Honor Band on even numbered audition years.
4. Chromatic scale is required for District Honor Band every year.
5. All scales are required for LMEA All-State every year.
6. Rhythm, articulation, and tempo must be adhered to.