

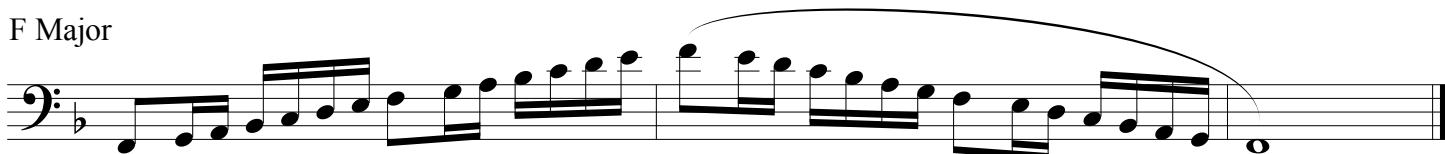
Major & Chromatic Scales Trombone & Baritone B.C.



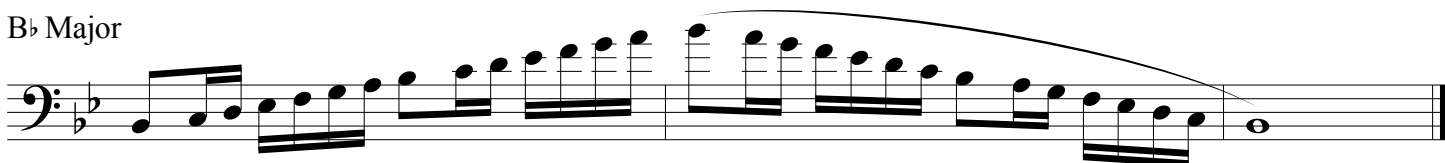
C Major



F Major



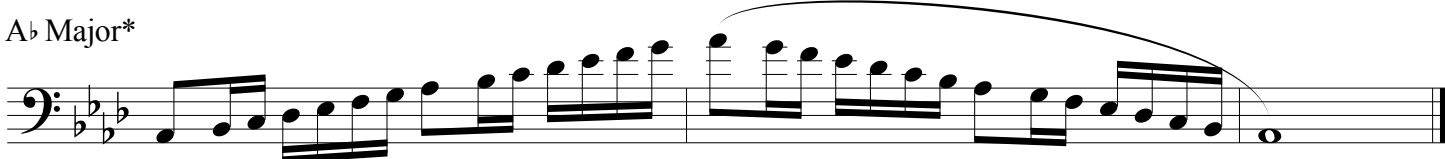
B \flat Major



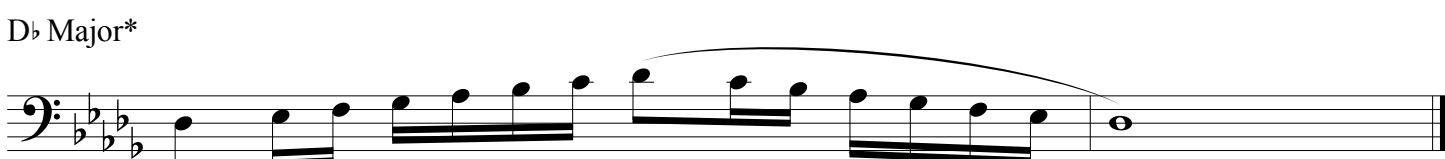
E \flat Major*



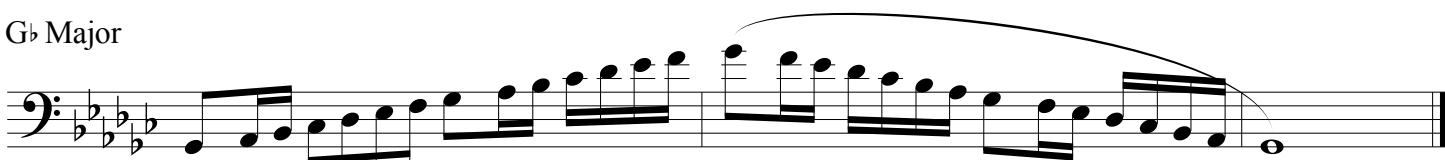
A \flat Major*



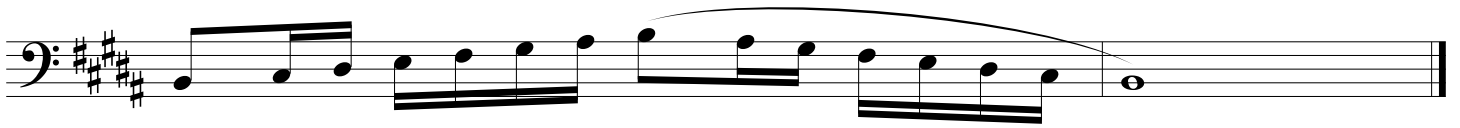
D \flat Major*



G \flat Major



B Major



E Major



A Major*



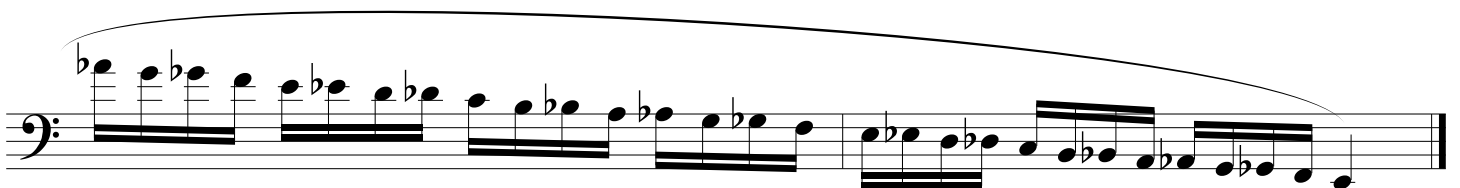
D Major*



G Major*



Chromatic Scale



1. Tempo is $\text{♩} = 72$
2. Scales marked with an asterisk (*) are required for District Honor Band on odd numbered audition years.
3. Scales without an asterisk (*) are required for District Honor Band on even numbered audition years.
4. Chromatic scale is required for District Honor Band every year.
5. All scales are required for LMEA All-State every year.
6. Rhythm, articulation, and tempo must be adhered to.